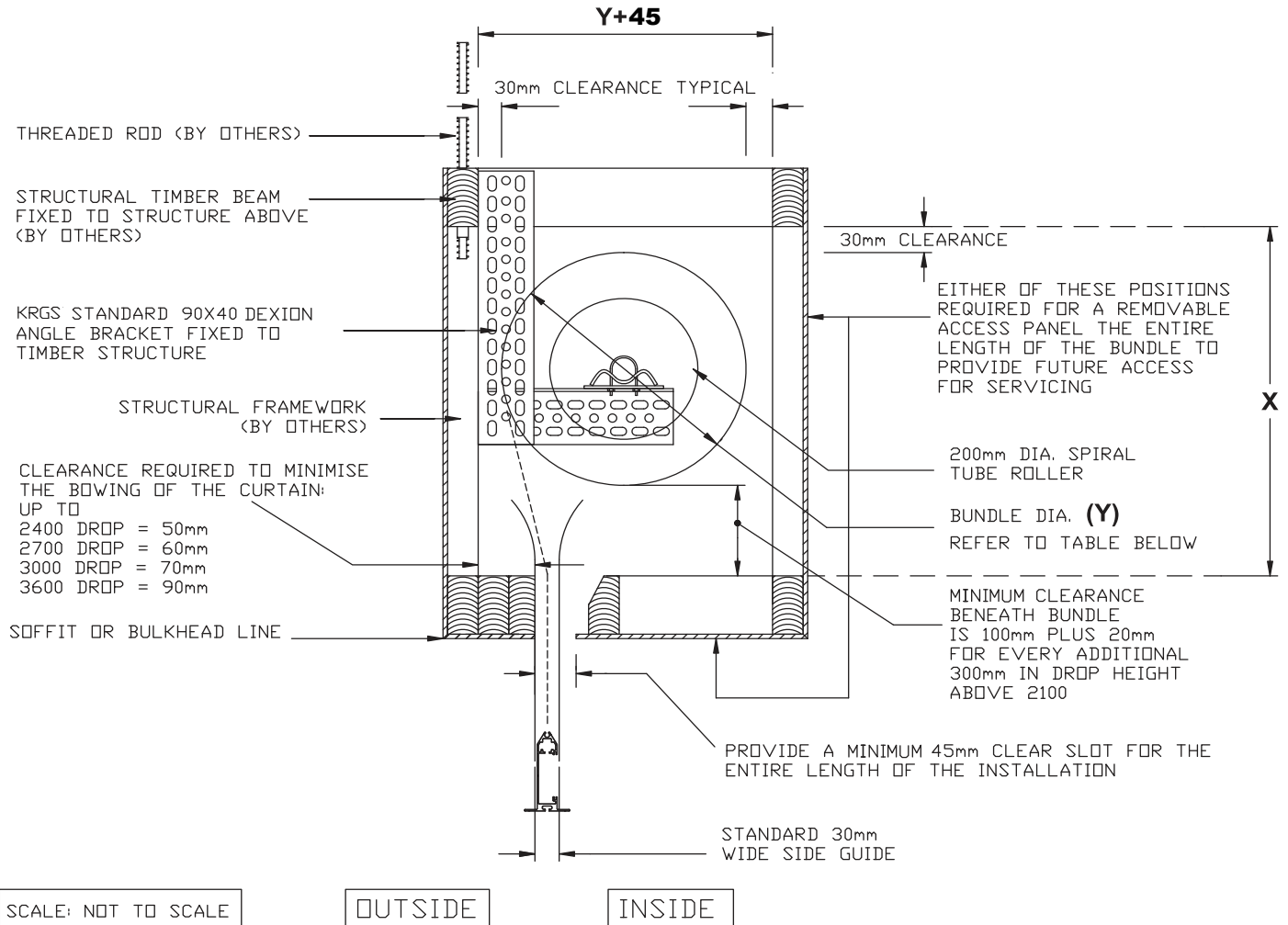


OPERATIONAL CLEARANCE TO SUIT

- ALUMINIUM - SECURITY ROLLER GRILLES
- ALUMINIUM - CLEARVISION ROLLER SHUTTERS
- ALUMINIUM - SERIES2 ROLLER SHUTTERS

## SUGGESTED BULKHEAD DETAILS MANUALLY OPERATED BY HAND TO SUIT



N.B THE INTERNAL END OF THE BULKHEAD MUST BE CLEAR TO AT LEAST THE BACK OF THE GUIDE OR OVERALL THE REMOVABLE SIDE MULLION

N.B DROP HEIGHT IS MEASURED FROM SOFFIT OR BULKHEAD LINE TO THE FLOOR

MANUAL OPERATION ONLY - FOR MOTORISED OPERATION REFER TO TECH SHEETS

### KRGS TYPICAL DIMENSIONS REQUIRED FOR VARIOUS DROPS

DROP HEIGHT (mm)	1200	1500	1800	2100	2400	2700	3000	3500
BUNDLE DIAMETER Y (mm)	290	300	320	330	340	370	400	420
<b>RECOMMENDED</b> INTERNAL SPACE REQUIRED X (mm)	<b>420</b>	<b>430</b>	<b>450</b>	<b>460</b>	<b>490</b>	<b>540</b>	<b>590</b>	<b>630</b>
<b>MINIMUM</b> INTERNAL SPACE REQUIRED X (mm)	400	410	430	440	450	480	510	530

KRGS HAS A CONTINUOUS PROGRAM OF PRODUCT DEVELOPMENT AND RESERVES THE RIGHT TO CHANGE SPECIFICATIONS AT ANY TIME WITHOUT NOTICE

- PLEASE NOTE:
1. KRGS SHUTTERS MUST BE INSTALLED TO STRUCTURAL SUPPORTS  
i.e. RHS STEEL POSTS, CORE FILLED MASONRY, TILT UP CONCRETE PANELS
  2. ALL STRUCTURAL SUPPORTS FOR BRACKETS AND SIDE GUIDES TO BE PROVIDED BY OTHERS